



N°022
Dakar 22 January 2025

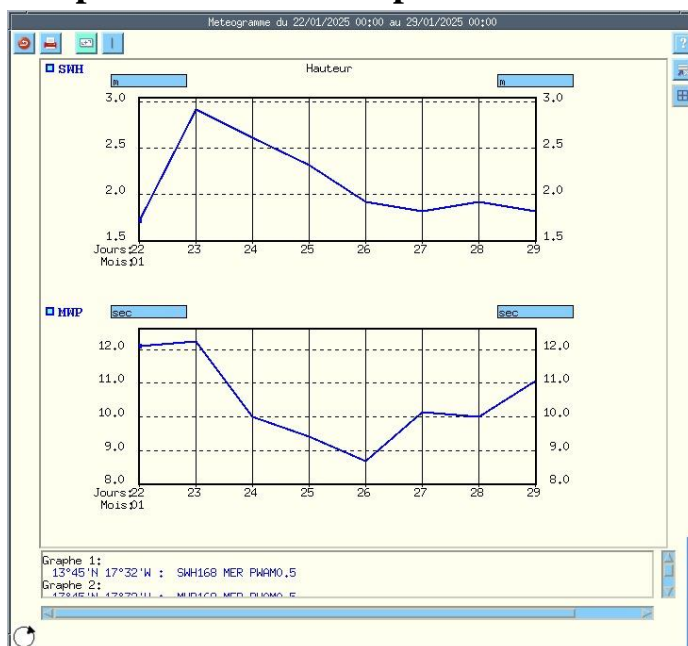
SPECIAL MARINE WEATHER FORECAST FOR MODEC

1/ SIGNIFICANT WEATHER: Sunny weather with heavy swell on the coast, up to 3m high, from today at 12pm until Saturday January 25 at 6am.

2/ SWELL FORECAST FROM 22/01/2025 TO 23/01/2025 AND TREND FOR 26
/01/2025:

Days/Hours Forecast	Swell 1	Swell 2	H (1/3) m	H (max)	Direction	Period	Peak_Wave_Period
12H	1,83	0,3	2,26		NW	13,6	
18H	2,48	0,29	2,72		NW	13,7	
24H	2,87	0,26	3	2,96	NW	12,6	13,9
30H	3,06	0,24	2,98		NW	12,1	
36H	2,92	0,23	2,96		NW	11,4	
48H	0,22	0,17	2,78	3	NW	10,15	12,6
Day 3	0,19	0,12	2,46	2,78	N	9,85	10,15
Day 4	0,45	0,16	1,96	2,46	N	9	9,85
Day 5	0,76	0,25	1,72	1,96	N	9,75	9,65

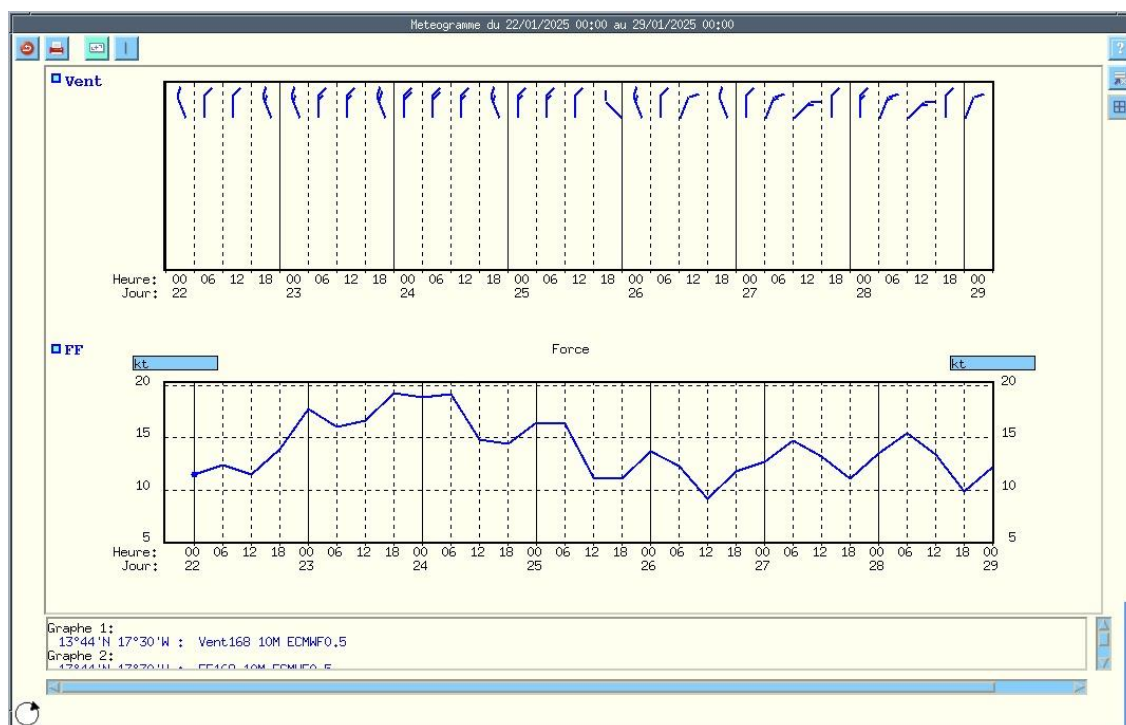
Graph of evolution and period of the swell:



3/ WIND FORECAST FROM 22/01/2025 TO 23/01/2025 AND TREND FOR 26/01/2025:

Days/hours Forecast	Wind Speed (10m) (kts)	Dir (10m)	Wind Speed (50m)	Gust 10 m	Dir (50m)	95e Percentile
12H	12,74	N	15,01	32,4	N	2,92
18H	16,63	N	21,71	40,3	N	4,62
24H	17,93	N	22,73	44,6	N	4,4
30H	17,93	N	19,22	45,7	N	4,13
36H	18,47	N	21,65	45,4	N	4,75
48H	18,09	N	22,57	49,3	N	5,04
Day 3	17,71	N	21,06	44,3	N	4,49
Day 4	18,25	N	20,03	45,7	N	4,13
Day 5	15,55	N	---	38,9	---	4,29

WIND EVOLUTION



Tidal height of the FPSO site:

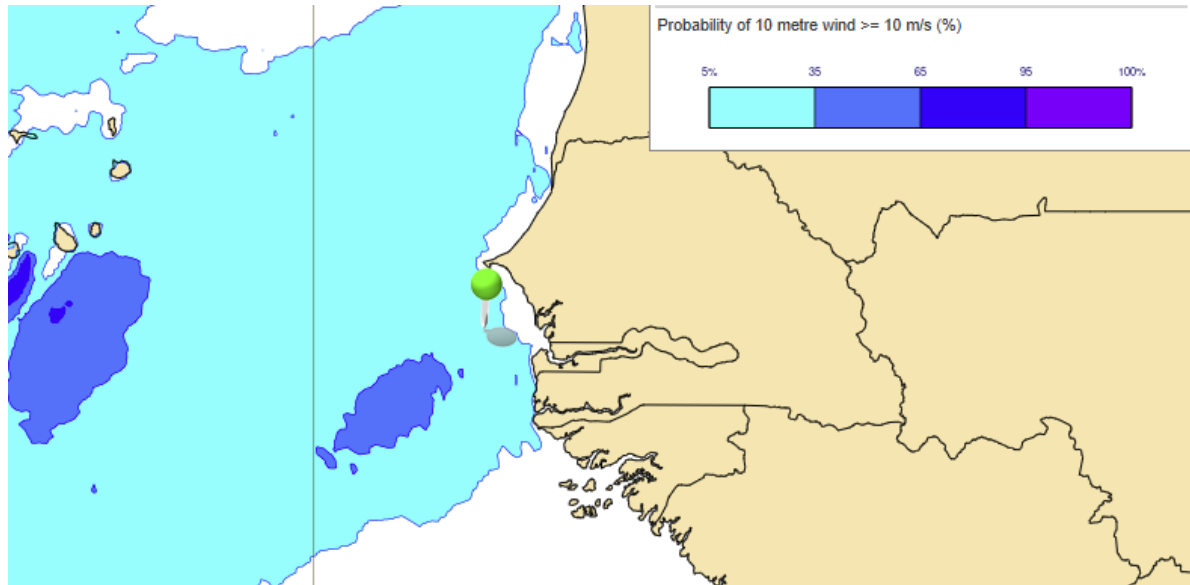
January 2025									
Date		Full Sea				Low Sea			
		Time	Height	Time	Height	Time	Height	Time	Height
22	January	02 h 14	1.35 m	15 h 03	1.26 m	08 h 31	0.72 m	20 h 54	0.83 m
23	January	03 h 10	1.27 m	16 h 15	1.24 m	09 h 26	0.76 m	22 h 13	0.85 m

Sea Surface Temperature Observed (in °C): 22.5

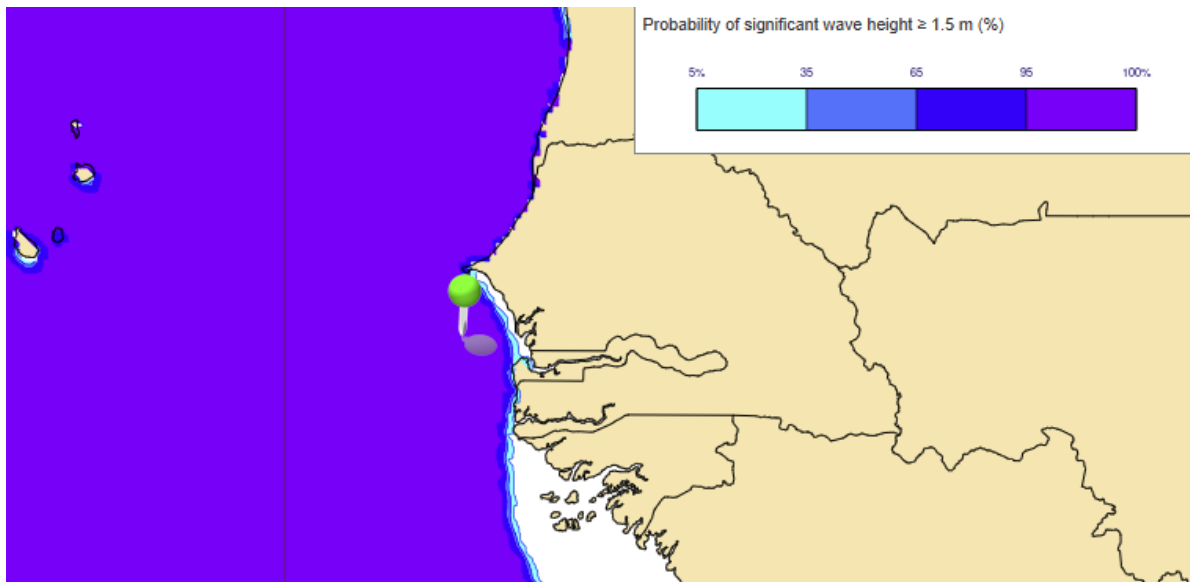
Expected Air Temperature (in °C): 21.8

Weather Windows Forecast

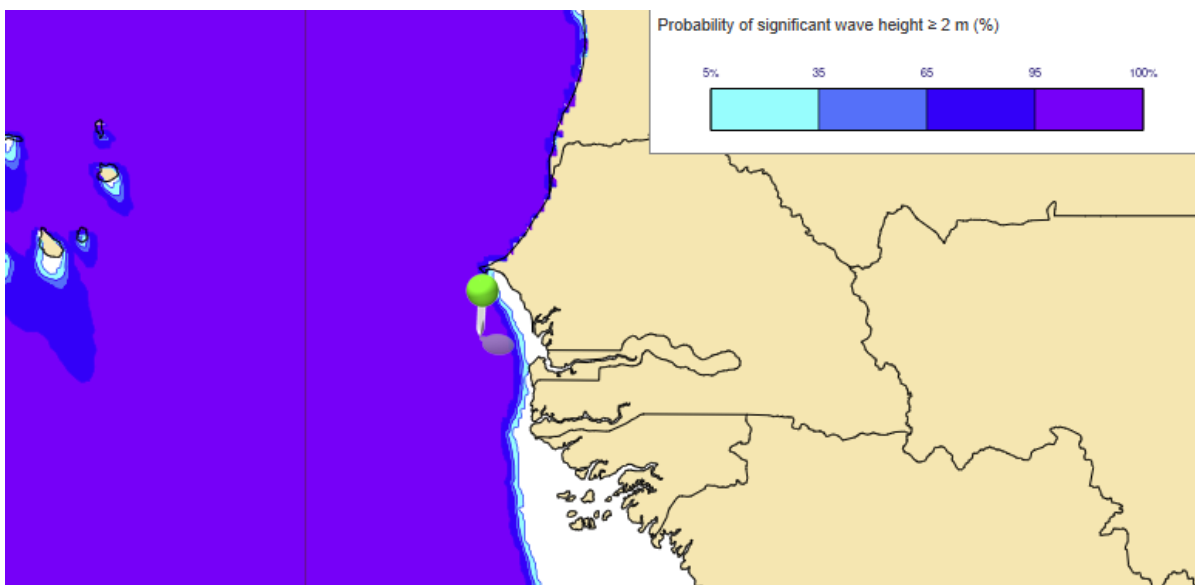
Winds 20 Kts



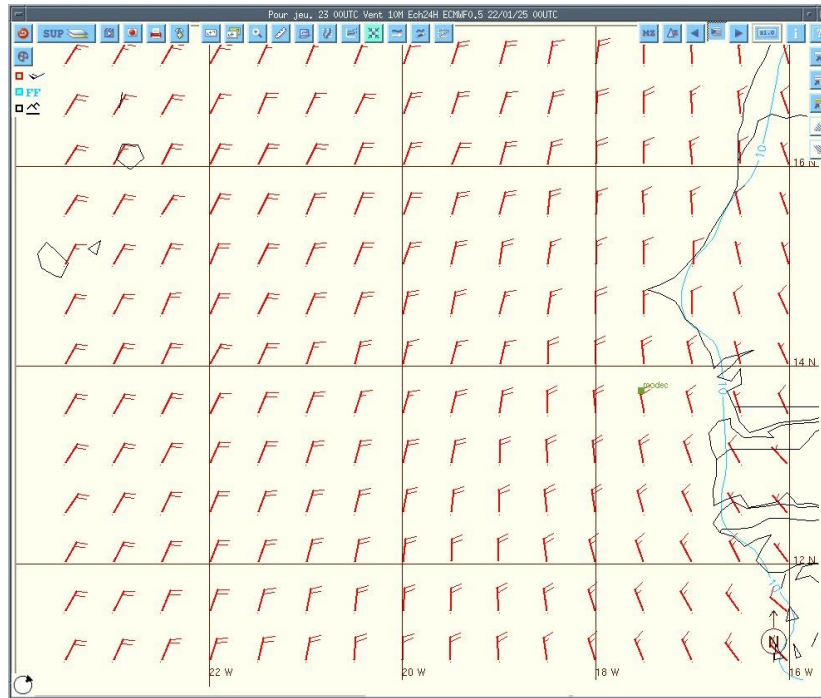
HSIG 1.5m



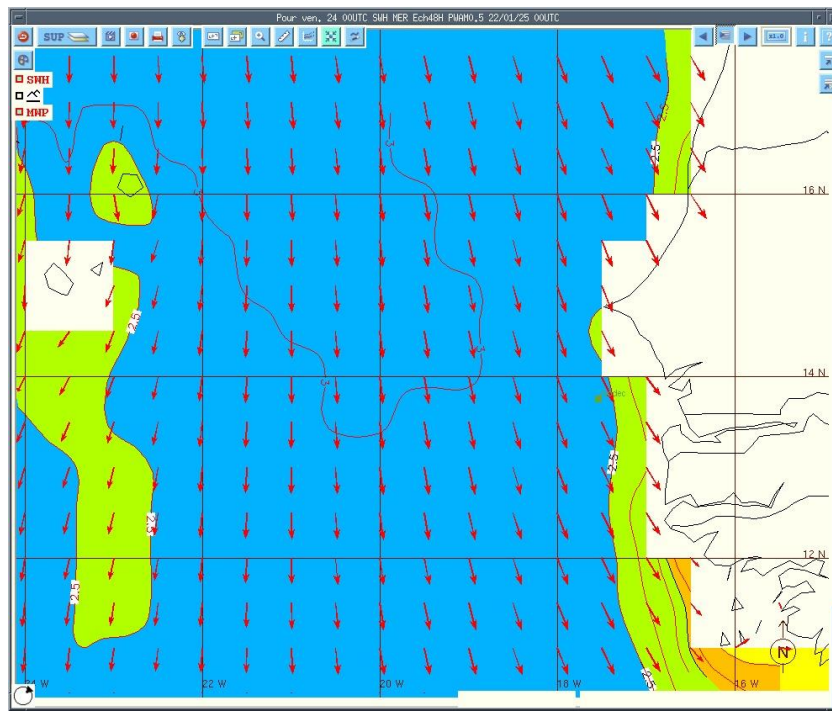
HSIG 2.0m



Wind Speed & Synoptic Chart



Wave Height & Direction Chart



Abbreviation chart

H: Height

SWH: Swell Wave Height

MWP: Mean Wave Period

Dir: Direction

FF: Wind Speed

HSIG: Significant Height